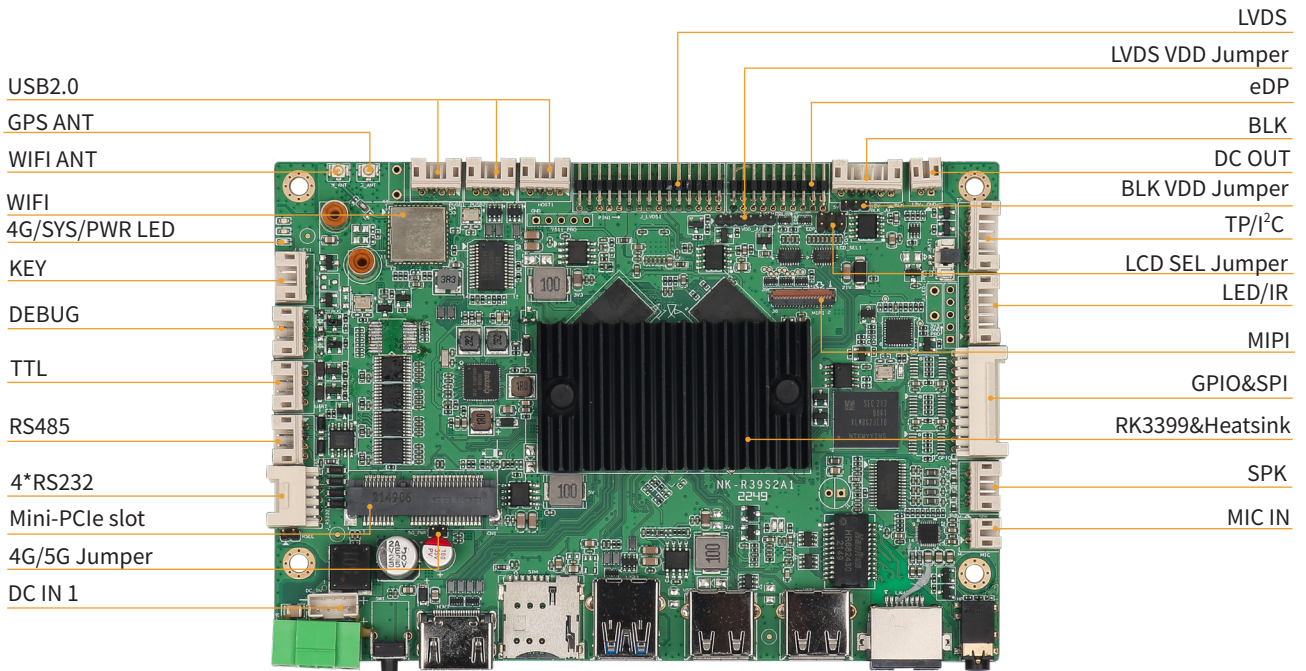


# NK-6A10

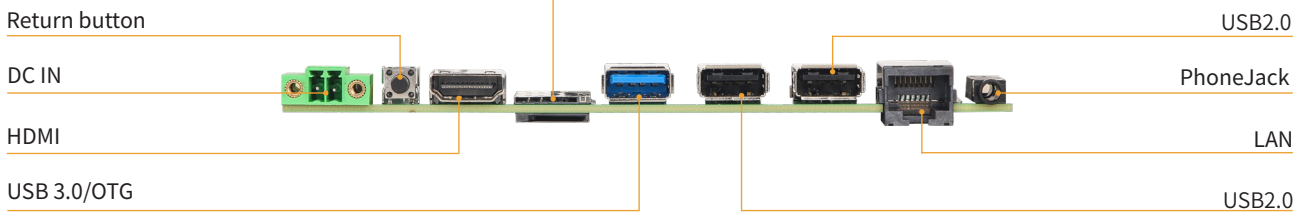
Rockchip ARM Cortex-A72 RK3399 3.5" SBC

## 特点 Feature

- Rockchip RK3399 ARM Dual Cortex-A72 and Quad Cortex-A53 1.8 GHz
- Onboard 2/4GB LPDDR4 memory and 16/32/64GB eMMC
- Supports 1 x HDMI 2.0 4K, 1 x LVDS, 1 x MIPI-DSI, and 1 x eDP
- Provides 1 x GbE, 1 x USB3.0(OTG), 5 x USB2.0, 5 x Serial, 1 x TTL, 1 x I<sup>2</sup>C, 2 x SPI, 8 x GPIO, 1 x PhoneJack
- Provides a MINI-PCIE with USB 3.0 signal for LTE/5G Modules
- Provides a Onboard 2.4G/5G WIFI, Support bluetooth5.0
- Provides a Onboard GPS
- Supports Linux and Android OS



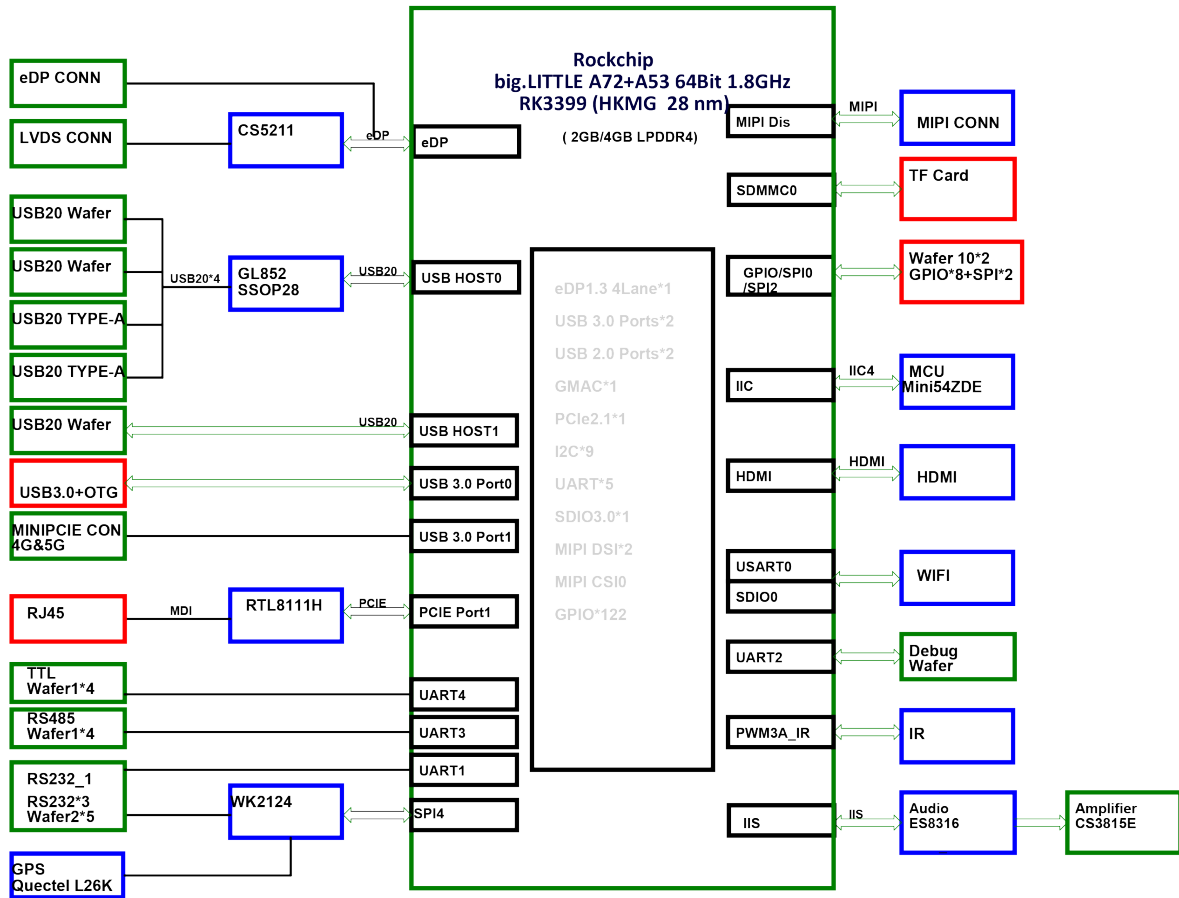
上: SIM 下: TF



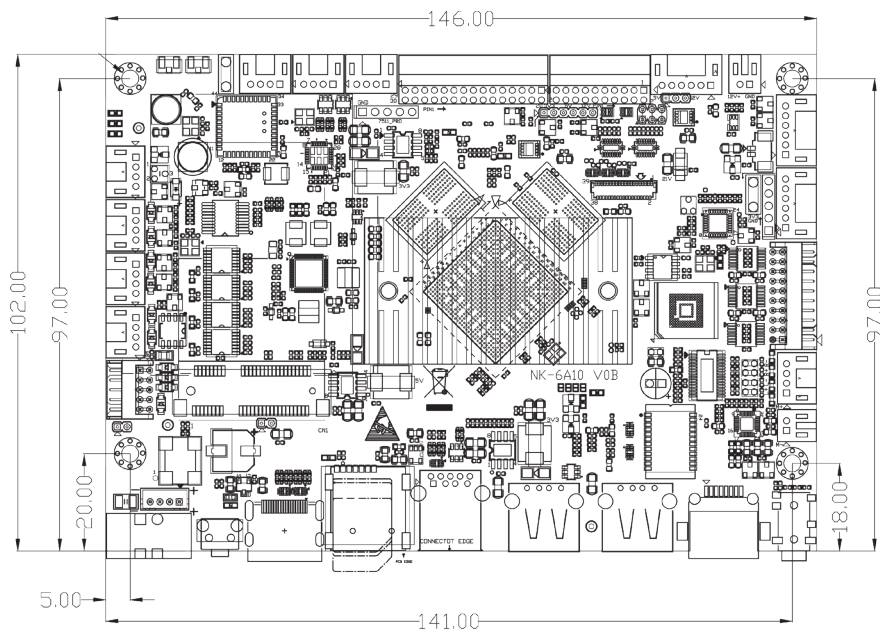
## 规格 Specification

处理器 Processor System	CPU	Rockchip RK3399 ARM Dual Cortex-A72 and Quad Cortex-A53 1.8 GHz
	GPU	Mali-T860MP4 GPU,OpenGL ES 1.1/2.0/3.1,OpenCL 1.1, DirectX 11
内存 Memory	Memory	Onboard 2/4GB LPDDR4
存储 Storage	eMMC	Onboard 16/32/64GB eMMC
	TF Socket	1 x TF card Socket,Support 128G TF card
外部接口 Rear I/O	Display	1 x HDMI 2.0, up to 3840x2160@60Hz
	Ethernet	1 x GbE (10/100/1000 Mbps) 1 x Onboard WIFI, Support 2.4G/5G WIFI, Support WiFi 802.11b/g/n protocol, Support BT5.0 (2.4G/5G option)
	USB	1 x USB3.0, OTG Colay,2 x USB2.0
	DC IN	12~24V power input, 2-pin lockable DC-IN phoenix terminal block
	Button	1 x Return Button
	PhoneJack	1 x Ø3.5 PhoneJack
内部接口 Internal I/O	Display	1 x LVDS
		1 x eDP,up to 1920×1080@60Hz
		1 x Mipi-DSI,up to 1920x1080@60Hz
	DEBUG	1 x DEBUG for debug
	KEY	1 x KEY ,Supports power on,reset,recovery
	Serial Port	1 x RS485, 4*RS232, 1 x TTL
	USB	3 x USB2.0 pin header
	DC IN 1	1 x DC IN pin header ,12V~24V Power In put
	DC OUT	1 x DC 12V Power Out put
	TP/I <sup>2</sup> C	1xTP/I <sup>2</sup> C
	LED/IR	1xLED/IR
	GPIO&SPI	8 x GPIO, 2 x SPI
	AUDIO	1 x MIC in,and Speaker out via pin header
GPS	GPS/BD module,Support GPS+ Beidou Function	
Expansion Slots	Mini-PCIe slot	1 x MINI-PCIE with USB 3.0 signal for LTE/5G Modules, 1 x SIM card socket
电源 Power	Type	12~24V power input
	Interface	1 x 2-pin phoenix terminal block
	Power Consumption	Boost 15W@12V
O.S Support	OS	Android11,Debian10
机械参数 Mechanism	Dimensions	(L)146mm x (W)102mm
	Gross Weight	0.6Kg
环境 Environment	Operating	-20°C ~60°C
	Storage	-30°C ~80°C
	Humidity	5~95% (Non-condensing)
	Vibration	5~500Hz, 3Grms operating

### 框架图 Block Diagram



### 机构图 Mechanical Drawing



单位 (Unit): mm

## 订购信息 Order Information

料号 Part No.	型号 Model	描述 Description
TBD	NK-6A10-216 V0B	ARM, RK3399, 2G, 16G eMMC, Standard, DC IN 12V~24V, 6*USB,1*LAN
G83.6A1001.0B.NES	NK-6A10-432 V0B	ARM, RK3399, 4G, 32G eMMC, Standard, DC IN 12V~24V, 6*USB,1*LAN
TBD	NK-6A10-464 V0B	ARM, RK3399, 4G, 64G eMMC, Standard, DC IN 12V~24V, 6*USB,1*LAN

## 包装清单 Packing List

料号 Part No.	数量 Qty	描述 Description
User Manual	1	User Manual for NK-6A10
Terminal block	1	2-pin terminal block

## 可选配件 Optional Accessories

料号 Part No.	名称 Part Name	描述 Description
K75.004010.00.C26	Power Adapter	Power Adapter( 侨威 KPL-040F-VI), 2pin 凤凰端子 ( 台湾进联 ), OUT:12V\3.3A, IN:220V, 能效六
KE1.000015.00.Y10	Power Cord	AC Power cord ( 国标电源线 )
KE1.000011.00.Y10	Power Cord	AC Power cord ( 欧标电源线 )
F06.000030.00.NDJ	4G 套件	Mini-PCIe 模组, USB 总线, 含 :4G 扩展卡, 7 模全网通 EC20CEHDLG\ 内部馈线 L=150mm\ 外部吸盘天线 L=3M
F06.000031.00.NDJ	4G 套件	Mini-PCIe 模组, USB 总线, 含 :4G 扩展卡, 7 模全网通 EC20CEHDLG\ 内部馈线 L=150mm\ 外部船桨天线 L=17CM
F06.000095.00.NDJ	4G 套件	Mini-PCIe 模组, USB 总线, 含 :4G 扩展卡, 5 模全网通 L716-CN\ 内部馈线 L=100mm\ 外部吸盘天线 L=3M
F06.000096.00.NDJ	4G 套件	Mini-PCIe 模组, USB 总线, 含 :4G 扩展卡, 5 模全网通 L716-CN\ 内部馈线 L=150mm\ 外部船桨天线 L=17CM